

Mezzanine Inspection Report (Scoping)

Date: 01/30/2015	Station Name: K03 Virginia Square	Mezzanine #: 098	Completed By: Mike Butler
------------------	-----------------------------------	------------------	---------------------------

Summary

Video scoping for the communication and power ducts in the upper and lower faregate arrays was completed. Pull strings were successfully installed in communication ducts for the upper and lower faregate arrays. Video scoping and pull string was installed in the power duct run from the kiosk to the AFC panel.

No scanning is required at this mezzanine.

Scoping of Faregate Array(s)

Task	Yes/No	Notes
Communications Duct – Upper Faregate Array (5 Gates)		
Was video scoping completed for the entire duct run?	Yes	Refer to "WMATA Virginia Square 6inch Upper Comm Faregate (1).avi" and "WMATA Virginia Square 3inch Upper Comm Faregate (1).avi"
Were pull strings installed at all faregates in the array?	Yes	
Were there any obstructions or blockages? Provide details of type and specific location.	No	
Is the duct at capacity? Provide additional details about the dimensions of ducts and number of wires.	No	6" and 3" ducts less than 10 wires
Communications Duct - Lower Faregate Array (3 Gates)		
Was video scoping completed for the entire duct run?	Yes	Refer to "WMATA Virginia Square 6inch Lower Comm Faregate (1).avi" and "WMATA Virginia Square 3inch Lower Comm Faregate (1).avi"
Were pull strings installed at all faregates in the array?	Yes	
Were there any obstructions or blockages? Provide details of type and specific location.	No	
Is the duct at capacity? Provide additional details about the dimensions of ducts and number of wires.	No	6" and 3" ducts less than 10 wires
Power Duct - Upper Faregate Array (5 Gates)		
Was video scoping completed for the entire duct run?	Yes	Refer to "WMATA Virginia Square 6inch Upper Power Faregate (1).avi"
Were there any obstructions or blockages? Provide details of type and specific location.	No	
Is the duct at capacity? Provide additional details about the dimensions of ducts and number of wires.	No	6" and 3" ducts less than 10 wires
Power Duct - Lower Faregate Array (3 Gates)		
Was video scoping completed for the entire duct run?	Yes	Refer to "WMATA Virginia Square 6inch Lower Power Faregate (1).avi"
Were there any obstructions or blockages? Provide details of type and specific location.	No	
Is the duct at capacity? Provide additional details about the dimensions of ducts and number of wires.	No	6" and 3" ducts less than 10 wires


Scoping of Power Duct - Kiosk to AFC Panel		
Task	Yes/No	Notes
Kiosk to Handhole 1 (5' run)		
Was video scoping completed for the entire duct / conduit run?	Yes	Refer to "WMATA Virginia Square 6inch Power Kiosk to HH1 (2).avi"
Was pull string installed?	Yes	
Were there any obstructions or blockages? Provide details of type and specific location.	No	
Is the duct / conduit at capacity? Provide additional details about the dimensions of duct / conduit and number of wires.	No	Two ducts were identified, one holding CAT 6 and the 6" duct holds the power wires with less than 10 wires
Handhole 1 to Handhole 2 (70' run)		
Was video scoping completed for the entire duct / conduit run?	Yes	Refer to "WMATA Virginia Square 6inch Power HH1 to HH2 (1).avi"
Was pull string installed?	Yes	
Were there any obstructions or blockages? Provide details of type and specific location.	No	
Is the duct / conduit at capacity? Provide additional details about the dimensions of duct / conduit and number of wires.	No	6" duct less than 10 wires
Handhole 2 to Handhole 3 (35' run)		
Was video scoping completed for the entire duct / conduit run?	Yes	Refer to "WMATA Virginia Square 6inch Power HH2 to HH3 (1).avi"
Was pull string installed?	Yes	
Were there any obstructions or blockages? Provide details of type and specific location.	No	Some congestion due to spray foam inside the duct, but the duct is in good condition
Is the duct / conduit at capacity? Provide additional details about the dimensions of duct / conduit and number of wires.	No	6" duct less than 10 wires
Handhole 3 to AFC Panel (5' run)		
Was video scoping completed for the entire duct / conduit run?	No	90 degree bend precluded scoping.
Was pull string installed?	Yes	
Were there any obstructions or blockages? Provide details of type and specific location.	No	
Is the duct / conduit at capacity? Provide additional details about the dimensions of duct / conduit and number of wires.	No	6" duct less than 10 wires
Observations / Issues / Next Steps		
Total power duct run from the kiosk to AFC panel is approximately 115'.		
Sign Off		
	GFP Representative	WMATA PRGM
Name:	Mike Butler	
Signature:		
Date:	02/24/2015	

Photo #1 – K03 Virginia Square: Duct run from kiosk to handhole 1



Photo #2 – K03 Virginia Square: Duct run from kiosk to handhole 2 and handhole 3

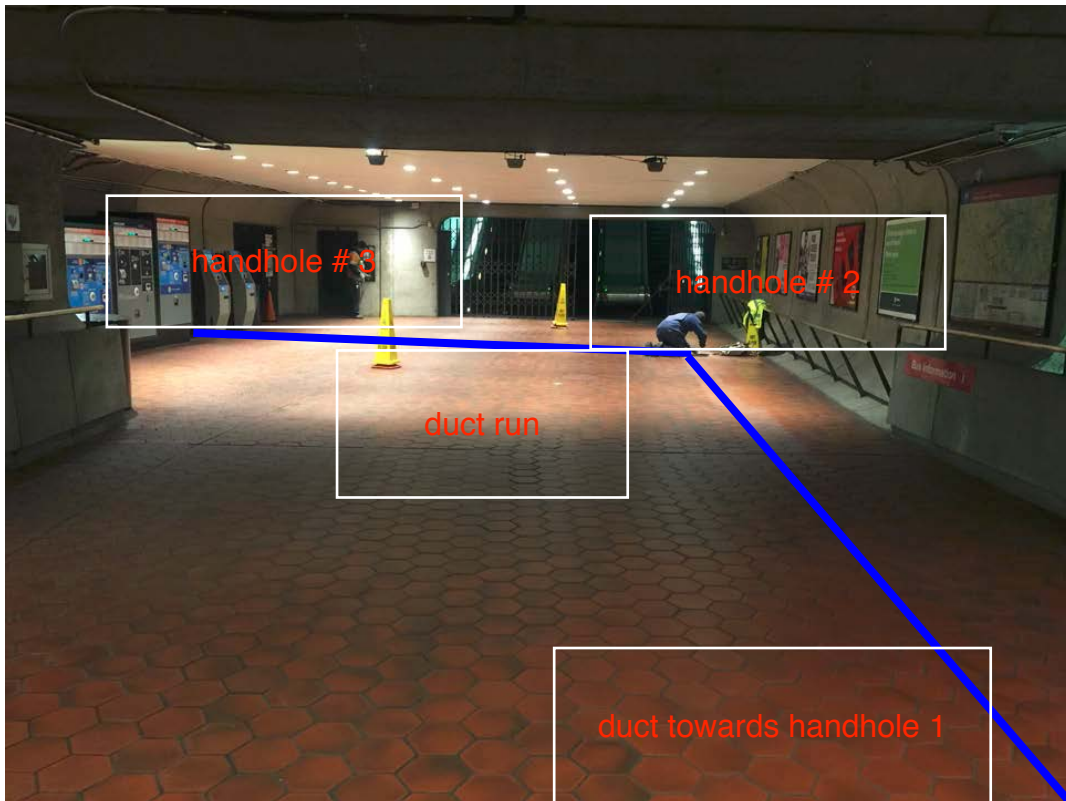


Photo #3 – K03 Virginia Square: Handhole 3 to AFC panel

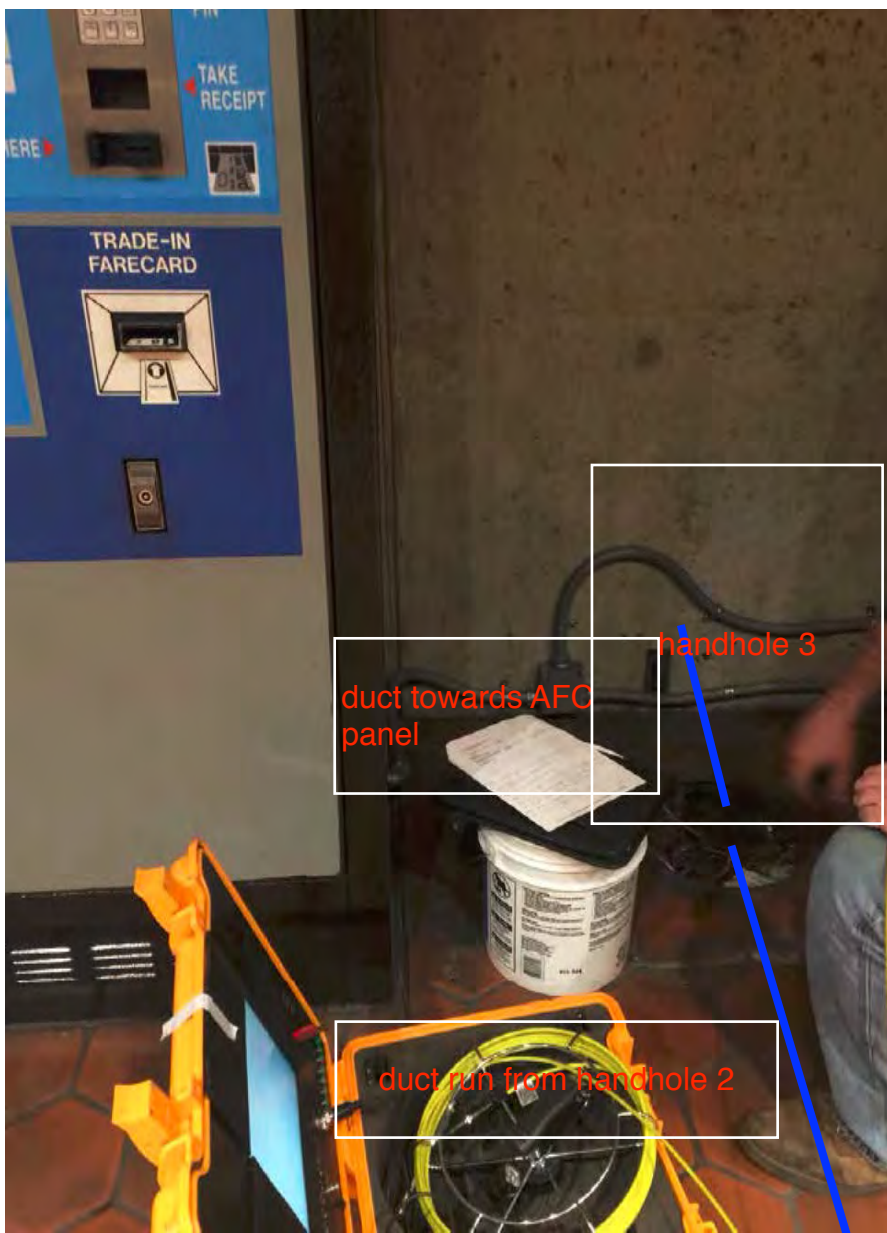
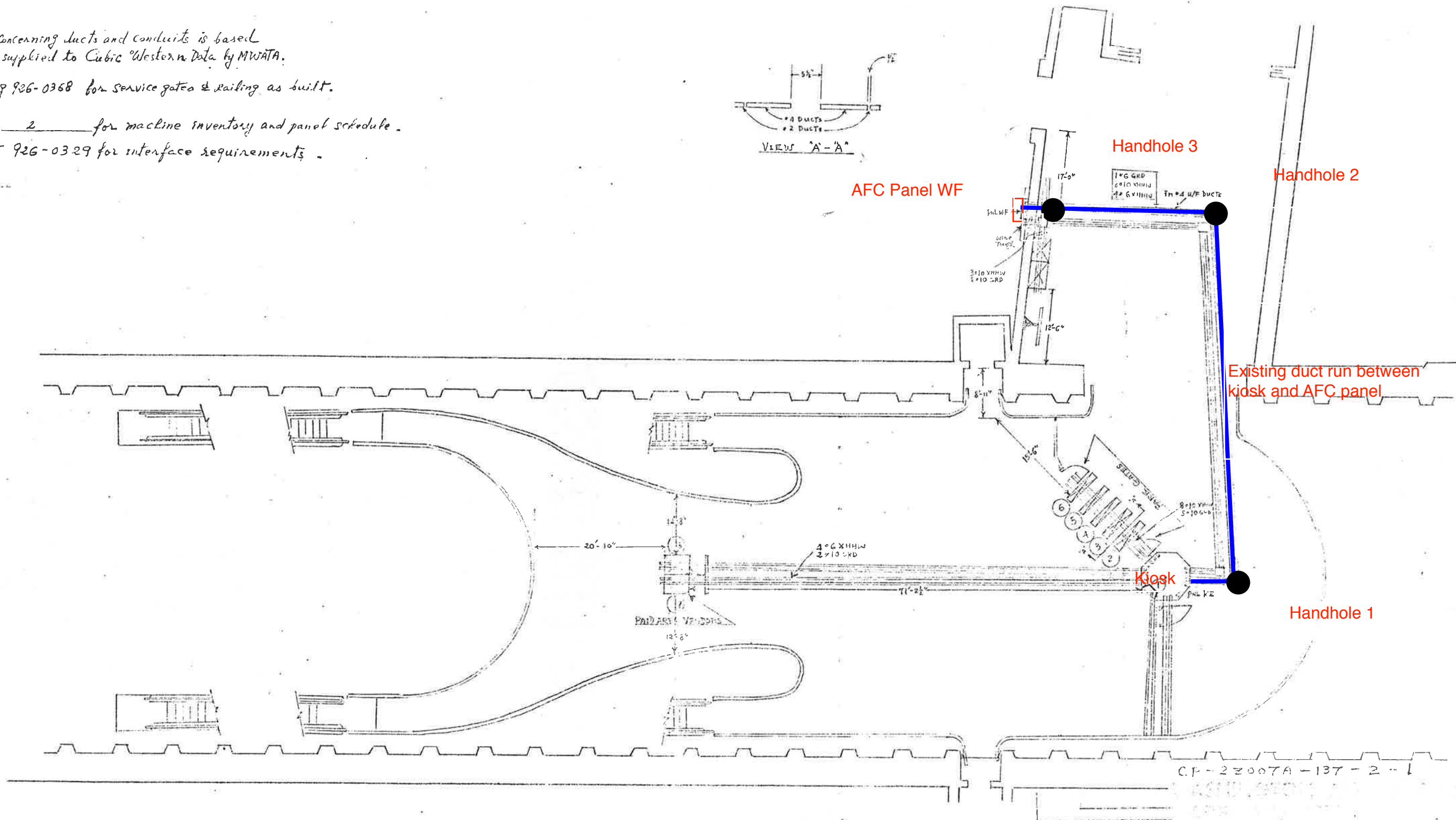
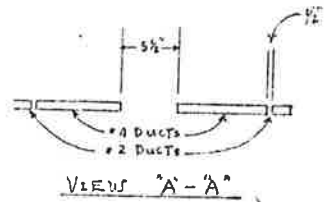


Photo #4 – K03 Virginia Square: Duct into AFC panel from handhole 3



NOTES:

1. All information concerning ducts and conduits is based on information supplied to Cubic Western Data by MWATA.
2. Refer to drawing 926-0368 for service gates & railing as built.
3. Refer to sheet 2 for machine inventory and panel schedule.
4. Refer to sheet 926-0329 for interface requirements.



AS BUILT DRAWING

ITEM	WIRE SIZE	TYPE	RUN	REMARKS
TRIP AREA VENDORS	#10	XHHW	30'	
TAPT GATE	#10	"	14'	
TRIP AREA VENDORS	#6	"	17'	
GROUND	#6	"	120'	
ST. ACE	#14	"	10' to 25'	
DRIPS	#10	"		
BULLSEYE	#10	"		

CONTRACT NUMBER		CUBIC WESTERN DATA A Subsidiary of Cubic Corporation 5650 KEARNEY MESA ROAD • POST OFFICE BOX NO 87 • SAN DIEGO, CA 92138	
DESIGN ACTIVITY APPROVAL		SIZE	DRAWING NUMBER
APPROVED			926-0411
SCALE		SHEET OF	

98

Mezzanine Inspection Report (Scoping)

Date: 01/30/2015	Station Name: K05 East Falls Church	Mezzanine #: 100	Completed By: Chris Loose
-------------------------	--	-------------------------	----------------------------------

Summary

Video scoping was completed and pull string was installed in the communications duct. Video scoping was attempted for the power duct in the faregate array however, the duct was at capacity. Video scoping and pull string was installed in the power duct from the kiosk to the AFC panel.

Scanning is not required at this mezzanine.

Scoping of Faregate Array(s)

Task	Yes/No	Notes
Communications Duct – Faregate Array (9 Gates)		
Was video scoping completed for the entire duct run?	Yes	Refer to WMATA East Falls Church 3inch Comm.avi and WMATA East Falls Church 6inch Comm.avi files.
Were pull strings installed at all faregates in the array?	Yes	Installed pull string in 3" duct
Were there any obstructions or blockages? Provide details of type and specific location.	No	No obstructions in 3" duct; however, 6" duct collapsed at first faregate
Is the duct at capacity? Provide additional details about the dimensions of ducts and number of wires.	No	
Power Duct - Faregate Array (9 Gates)		
Was video scoping completed for the entire duct run?	No	Refer to WMATA East Falls Church 6inch Power Faregate.avi file.
Were there any obstructions or blockages? Provide details of type and specific location.	Yes	Due to high capacity of wires in 6" duct, scoping could not be completed
Is the duct at capacity? Provide additional details about the dimensions of ducts and number of wires.	Yes	6" duct was at 80% capacity


Scoping of Power Duct - Kiosk to AFC Panel		
Task	Yes/No	Notes
Kiosk to Handhole 1 (20' run)		
Was video scoping completed for the entire duct / conduit run?	Yes	Refer to WMATA East Falls Church 6inch Power Kiosk to HH1, HH1 to AFC.avi file.
Was pull string installed?	Yes	
Were there any obstructions or blockages? Provide details of type and specific location.	No	
Is the duct / conduit at capacity? Provide additional details about the dimensions of duct / conduit and number of wires.	No	6" duct less than 15 wires
Handhole 1 to AFC Panel (100' run)		
Was video scoping completed for the entire duct / conduit run?	Yes	Refer to WMATA East Falls Church 6inch Power Kiosk to HH1, HH1 to AFC.avi file.
Was pull string installed?	Yes	
Were there any obstructions or blockages? Provide details of type and specific location.	No	
Is the duct / conduit at capacity? Provide additional details about the dimensions of duct / conduit and number of wires.	No	6" duct less than 15 wires
Observations / Issues / Next Steps		
Total power duct run from kiosk to AFC panel is approximately 120'.		
Sign Off		
	GFP Representative	WMATA PRGM
Name:	Zach Fitzwater	
Signature:		
Date:	01/30/2015	

Photo #1 – K05 East Falls Church: Duct run from kiosk to handhole 1 and from handhole 1 towards AFC panel

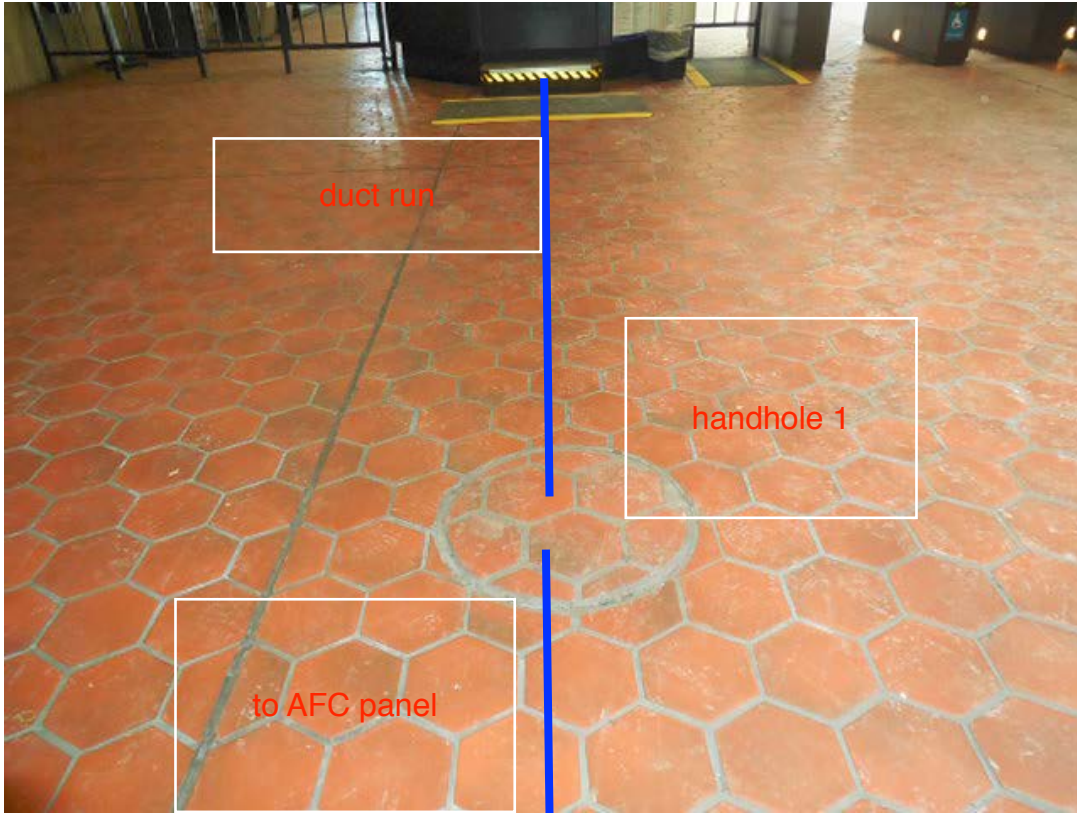
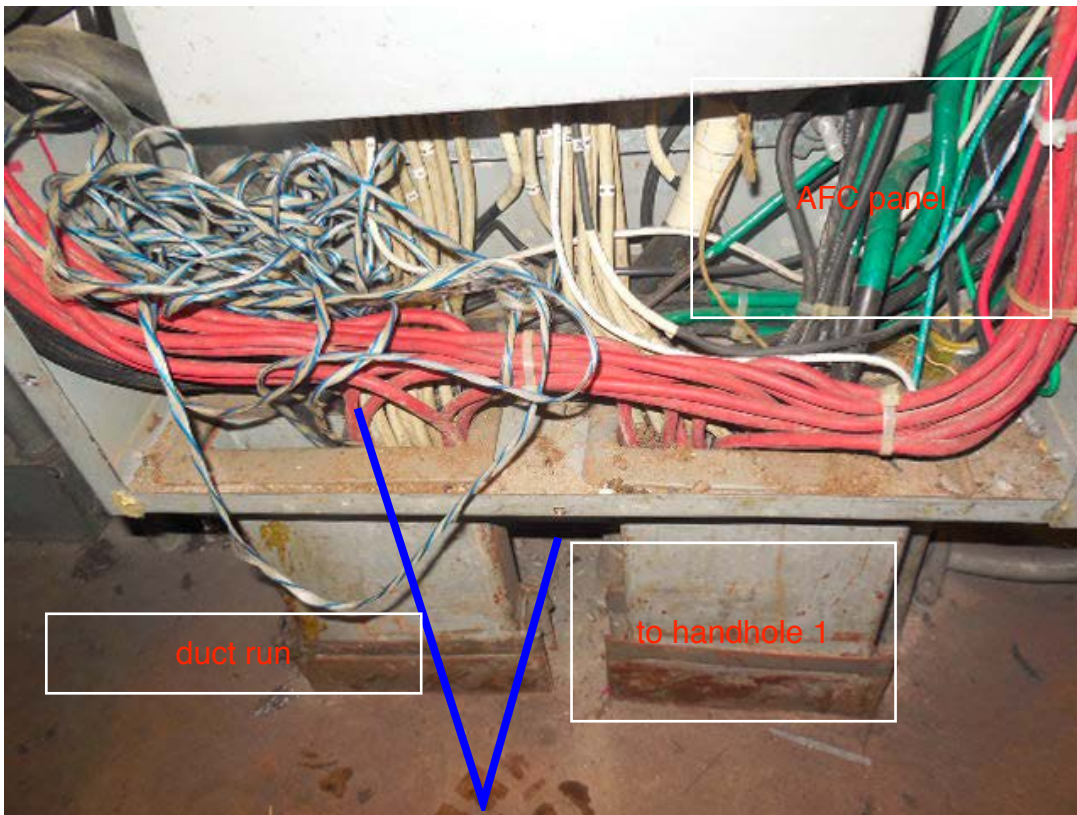


Photo #2 – K05 East Falls Church: Duct run into AFC panel from kiosk.



WASHINGTON METROPOLITAN AREA TRANSIT AUTHORITY

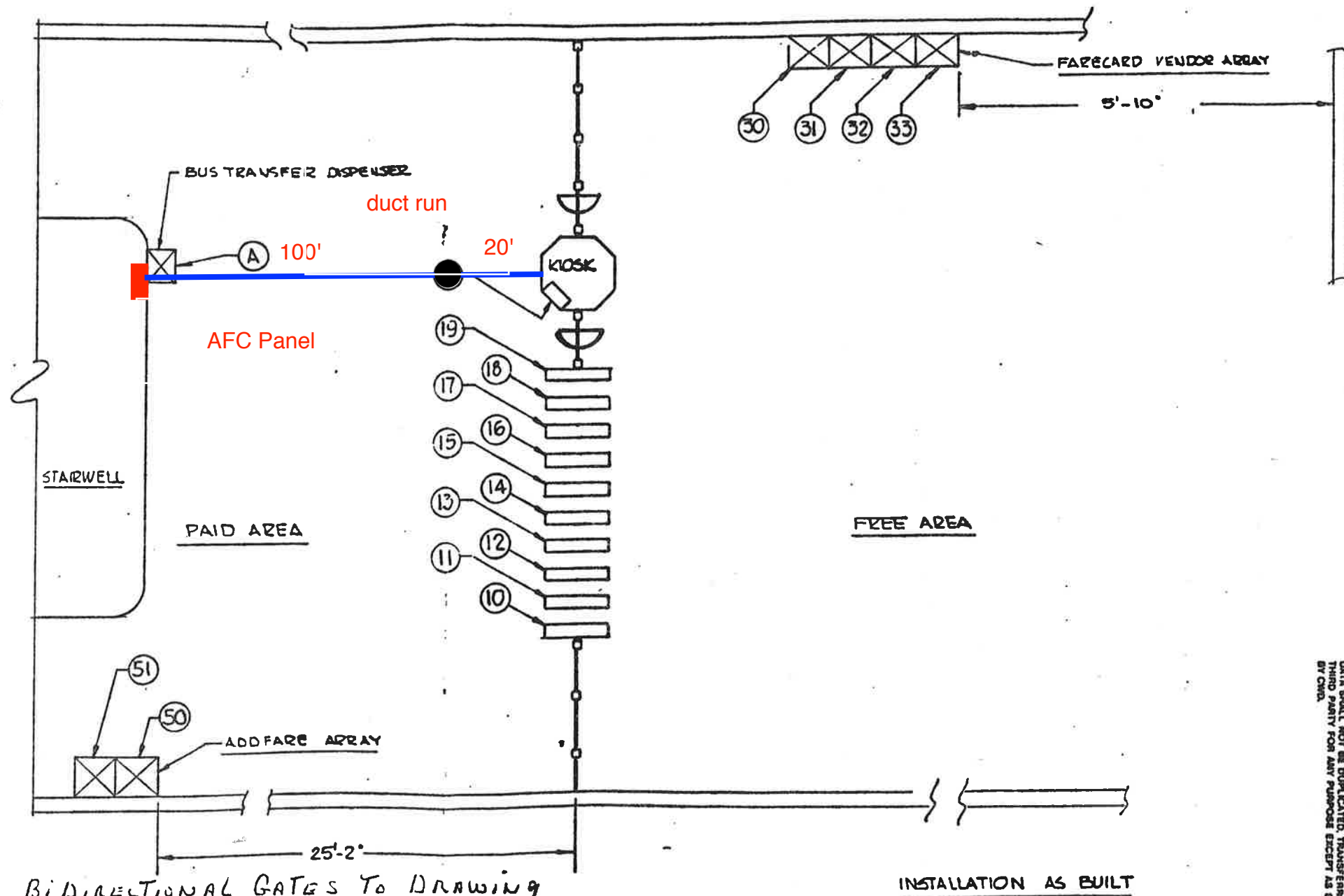
APPROVED AS CORRECTED
(RESUBMITTAL NOT REQUIRED)

Approval Does Not Relieve the Contractor of the Responsibility for the Accuracy of this Document or for Full Compliance with the Contract Requirements.

BY: _____
For Contracting Officer

DATE: 1-11-89

PANEL # F				
POSITION NUMBER	MACHINE TYPE	SERIAL NUMBER	CIRCUIT BREAKER NUMBER	WIRE SIZE (AWG)
A	KPER DISPENSER		1. FG 19/0	22.
1	EDADS	DS 8013	2. FG 18/3	23.
10	EXIT GATE	GX 4502	3. FG 17/4	
11	REV. GATE	GR 7528	4. FG 16/5	
12	"	GR 7529	5. FG 16/6	
13	"	GR 7517	6. FG 14/7	ALL
14	"	GR 7502	7. FG 13/8	MACH.
15	"	GR 7522	8. FG 12/9	6 GA
16	"	GR 7506	9. FG 11/10	WIRE
17	"	GR 7531	10. FG 10/11	
18	"	GR 7510		
19	ENTRY GATE	GN 3501	12. FV 53	
30	FARECARD VENDOR	FV 1216	13. FV 32	
31	"	FV 1188	14. FV 31	
32	"	FV 1311	15. FV 30	
33	"	FV 1125	16. AM 50	
50	ADDFARE	AM 2705	17. AM 51	
51	ADDFARE	AM 2704	18. KPER	
			21.	42.



1. ADD BIDIRECTIONAL GATES TO DRAWING
 2. SERVICE GATE NO. 12 BREAKER NO. 1
 3. " " " 13 " " 2
 4. " " " 14 " " 3
 5. " " " 15 " " 4
 6. " " " 16 " " 5
 7. " " " 17 " " 6
 8. " " " 18 " " 7
 9. " " " 19 " " 8
 10. " " " 20 " " 9
- MEZZANINE PLAN

CP-2007E-102-2-1

NOTICE OF PROPRIETARY RIGHTS IN DATA
THE DATA CONTAINED HEREIN IS PROPRIETARY TO CUBIC WESTERN DATA CORP. THIS DATA SHALL NOT BE DUPLICATED, TRANSMITTED, MADE AVAILABLE, OR USED BY ANY THIRD PARTY FOR ANY PURPOSE EXCEPT AS SPECIFICALLY AUTHORIZED IN WRITING BY CWD.

DO NOT SCALE DRAWING

UNLESS OTHERWISE SPECIFIED
DIMENSIONS ARE IN INCHES
TOLERANCES ON DIMENSIONS ARE AS SHOWN

CONTRACT NUMBER: D A
DRAWING NUMBER: 926-0461
SHEET 1 OF 1

TITLE: EAST FALLS CHURCH STATION
INSTALLATION PLAN

CODE IDENT NO. 57560

D 926-0461

DATE: 1/11/89
DRAWN: F. STERN
CHECK: [blank]
DESIGN: [blank]
ENGINEER: [blank]
DESIGNED BY: [blank]
DESIGNED BY: [blank]